



## 60W 100W 150W Outdoor LED Street Light

### Our Product Introduction

for more products please visit us on [solarledstreet-light.com](http://solarledstreet-light.com)

#### Basic Information

- Place of Origin: China
- Brand Name: Yahua lighting
- Certification: CE ROHS
- Model Number: YHZ-SL
- Minimum Order Quantity: 10pcs
- Price: USD29-USD56.00/PC
- Packaging Details: Foam+Carton
- Delivery Time: 7 Days
- Payment Terms: D/A, T/T, Western Union, Western Union, MoneyGram
- Supply Ability: 5000PCS



#### Product Specification

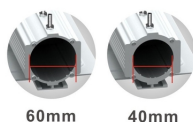
- Input Voltage(V): 85-265V
- Material: Die Casting Aluminum
- CRI: >80
- Color Temperature(CCT): 4000K 5000K 6000K
- Lamp Luminous Efficiency: 130Lm/w
- Diffuser: Tempered Glass
- IP Rating: 66
- Warranty: 3-5 Years
- Highlight: 150W Outdoor LED Street Light, 60W LED Street Light



#### More Images



Two specifications of the light poles back cover, the lamps can be used more widely



## Product Description

### CE Approved high bright 60W 100W 150W Die Cast Aluminum outdoor led street light

Input Voltage	AC85V 265V
Frequency Range	50Hz 60Hz
Total Harmonic Distortion	≤ 10 %
Power Factor	0.95
LED chip	3030
Led Luminous Efficiency	100 110Lm/W
Led Initial Flux	5700 6300Lm
Lamp Efficiency	93 %
Color Temperature	2700-6500K
Color Rendering Index	Ra 80
Warranty	3-5 years
Working Temperature	-40°C +50°C
IP Grade	IP65
Working Life-span	>50000H

#### Outdoor led street lighting Features:

With all aluminum positive and other cooling technology, perfect and efficient solution to the problem of LED heat dissipation, greatly extend the life of light source.

Free from dust, water design, reduce the pressure of cleaning and maintenance, suitable for outdoor environment.

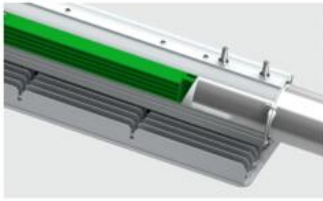
Ultra-thin shape design, easy storage and maintenance.

high-pressure cast aluminum shell molding of the paint processing, strong corrosion resistance.

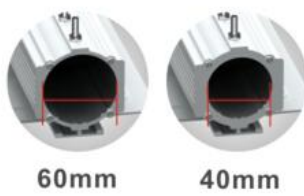
Waterproof Protection level up to IP66.IP67

High-pressure die casting aluminum fin and shell integration, durable, impact resistance





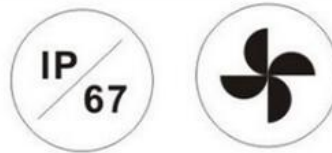
Integrated design of driver box and arm can save the space and reduce the wind resistance to the best.



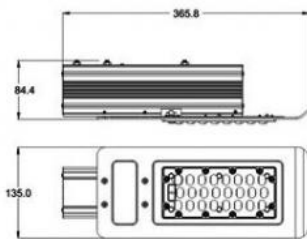
Support Diameter 40mm and 60mm's pole



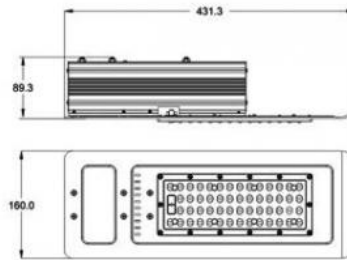
Prospective design, excellent performance



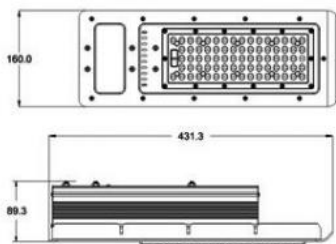
IP67 Grade, Wind resistance Grade-17



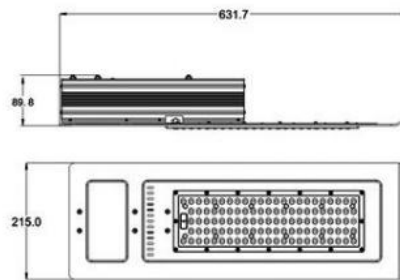
30W



60W

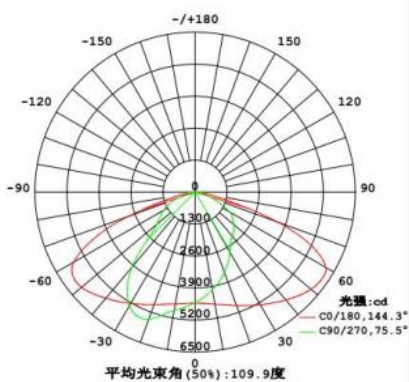


90W

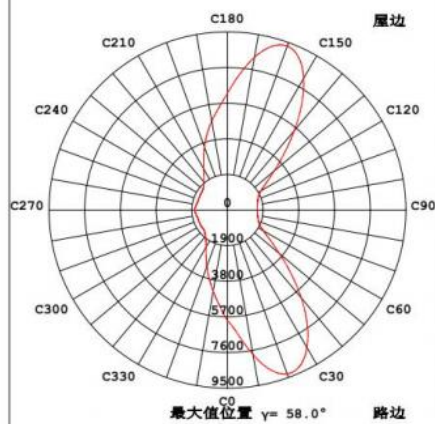


120W

子午面配光曲线



最大光强处圆锥面光强分布曲线









 **Shaanxi Yahua Lighting Electric Equipment Co., Ltd.**

 +86 2981028690

 [summer@syhzm.com](mailto:summer@syhzm.com)

 [solarledstreet-light.com](http://solarledstreet-light.com)

No.1 Xinxu Avenue New Industrial Park, Hi-tech Zone, Xi'an, China