



## Led Floodlighting 130 Lm/w 500 Watt Tower Crane Lights

### Our Product Introduction

#### Basic Information

- Place of Origin: China
- Brand Name: Yahua lighting
- Certification: CE ROHS
- Model Number: YHZ-SPD
- Minimum Order Quantity: 10pcs
- Price: USD100-195.00
- Packaging Details: Foam+carton
- Delivery Time: 5-8Days
- Payment Terms: D/A, D/P, T/T, Western Union
- Supply Ability: 3000pcs

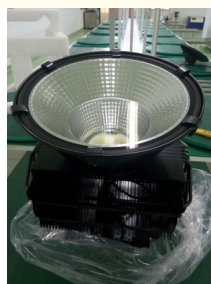


#### Product Specification

- Material: Aluminum
- IP: 65
- Light Source: High Brightness LED Chip
- Lumen Efficiency: 130Lm/w
- Color Temperature: 3000K To 6000K
- Lifetime: 50000hours
- Warranty: 5 Years
- Highlight: 500 Watt Tower Crane Lights,  
130 Lm/w Tower Crane Lights,  
130 Lm/w Tower Crane Lighting



#### More Images



## Product Description

Aluminum Tower crane led industrial 400watt 500watt led floodlight waterproof

|                                  |  |
|----------------------------------|--|
| <b>Product name :</b>            | High power led flood light tower crane light |
| <b>Power :</b>                   | 200w 300w 400w 500w                          |
| <b>Light source :</b>            | SMD3030 Lumileds chips                       |
| <b>Luminous efficiency :</b>     | 130 lm/w                                     |
| <b>Beam angle :</b>              | 25°/60°/90°(by different lampshade)          |
| <b>Color temperature:</b>        | 3000K/4000K/5000K/5700K/6500K                |
| <b>CRI:</b>                      | >70 or >80                                   |
| <b>Driver :</b>                  | Meanwell ELG model                           |
| <b>Input :</b>                   | AC85v-277V                                   |
| <b>Housing color available :</b> | Normally Black                               |
| <b>IP rating :</b>               | IP65   |
| <b>PF:</b>                       | 0.95   |

Excellent heat conductivity.

The transmittance is up to 92%.

Use toughened glass, high temperature resistance.

The surface of the radiator is treated with anodic oxidation.

Simple installation, easy to remove, wide range of application.

Efficient heat sink: use of die-casting cold forging technology, large cooling area, good cooling effect.

Shell with high-pressure die-casting aluminum, solid and stable structure, strong impact resistance, strong pit shock, shell surface paint treatment, anti-oxidation, anti-salt spray, anti-corrosion, anti-rust.

Use High luminous SMD3030 light source, with higher luminous efficiency, can get about 100-155lm/w, after we test, less light failure, energy saving and better illumination effect, high stability, longer life-span.

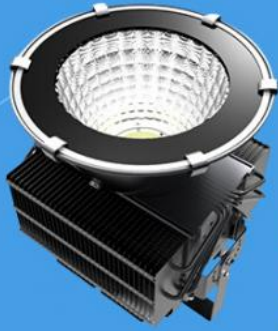
Resist Lightning surge voltage 4KV



**WIDE APPLICATION**

100W to 500W for options

Widely application for golf course,  
stadium, square, building,  
docks, workshop, etc.  
To replace Metal Halide  
light and HPS light.



SPORT STADIUM



WHARF




SQUARE

## Application



 **Shaanxi Yahua Lighting Electric Equipment Co., Ltd.**

 +86 2981028690

 [summer@sxyhzm.com](mailto:summer@sxyhzm.com)

 [solarledstreet-light.com](http://solarledstreet-light.com)

No.1 Xinxi Avenue New Industrial Park, Hi-tech Zone, Xi'an, China