



## 300W LED High Bay Light 6500K IP65 Aluminum Steel Black Housing 50000 Hours Lifespan

Our Product Introduction

for more products please visit us on [solarledstreet-light.com](http://solarledstreet-light.com)

### Basic Information

- Place of Origin: China
- Brand Name: Yahua lighting
- Certification: CE ROHS IES
- Delivery Time: 5-8 Days
- Payment Terms: L/C, D/A, D/P, T/T, Western Union, MoneyGram
- Supply Ability: 3000pcs per month



### Product Specification

- Wattage Range: 50W To 500W
- Lumens Output: 5,000 To 50,000 Lumens
- Mounting Options: Pendant, Surface, And Chain
- Color Temperature Range: 2700K To 6500K
- Material Options: Aluminum And Steel
- Beam Angle Options: Narrow, Medium, And Wide
- Voltage Range: 100V To 277V
- Driver Options: Constant Voltage And Constant Current Drivers
- IP Rating: IP65 To IP68 (weather And Dust-resistant)
- Lifespan: 50,000 To 100,000 Hours Of Operation
- Highlight: 300W LED High Bay Light, Industrial Aluminum LED High Bay Light, 6500K High Bay Led Lighting



### More Images



## Product Description

### Products Description

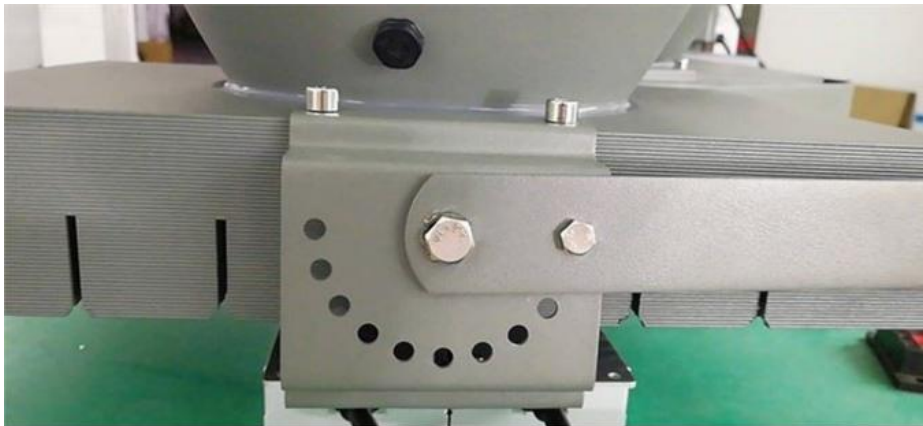
Our selection of Industrial High Bay LED Lighting Fixtures has been carefully engineered with energy efficiency and eco-friendliness in mind, making them the ideal lighting solution for all of your industrial needs. With high luminous brightness and an extended lifespan, these lights feature an imported CREE-XTE chip that is perfect for a wide variety of industrial settings. The 1060 aviation aluminum material housing and special oxidation and heat conduction treatment used on the surface of these lights greatly improves heat dissipation, minimizing temperature differences, light source decay, and junction temperature of the light source to only 3%. With a lifespan of up to 50,000 hours and a constant current power supply that offers high efficiency, low heat, and high constant current precision, our Industrial High Bay LED Lighting Fixtures are unparalleled in quality. Additionally, our unique structure design guarantees maximum efficiency, energy savings, and environmental protection. And with an impressive IP65 rating, these fixtures are built to withstand even the toughest of industrial environments.

### Features

1: We're proud to say that we meticulously craft all of our lighting fixtures in-house. This allows us to guarantee the highest quality and cost efficiency possible. We construct our fixtures using top-of-the-line materials and state-of-the-art production techniques, ensuring they not only withstand the test of time but also provide dependable lighting solutions for a wide range of commercial and industrial applications. Choosing us means there are no middlemen involved. You can trust that you're receiving the best value for your investment. We never compromise on quality in our designs, carefully selecting the finest materials for everything from our heat sink to the LED chips used in our products. The result is long-lasting, high-performing lighting fixtures.

2: Our high bay LED lighting fixtures are specially designed for industrial use with a surface that has undergone unique treatment to enhance heat dissipation for improved performance of the light board and power supply. The outstanding oxidative and thermal conductivity treatment of our fixtures makes them ideal for use in hot, humid environments, ensuring long-term stability and reliable performance. Furthermore, better heat dissipation extends the lifespan of our fixtures, making them less likely to require frequent maintenance or replacement. Lastly, the surface treatment of our fixtures provides excellent protection against corrosion and wear, ensuring they stay in excellent condition for an extended period.

3: Our high bay lights come with a top-of-the-line constant current power supply, ensuring an unparalleled performance that boasts remarkable precision, minimal heat generation, and energy efficiency. We understand that stable lighting in commercial and industrial settings is imperative, which is why our fixtures are designed to provide reliable and consistent lighting, regardless of the surrounding conditions. Moreover, our constant current technology helps in reducing energy consumption, making it a cost-effective option in the long run. Our fixtures offer brighter illumination with fewer watts, promoting sustainable and eco-friendly lighting solutions.



### Technical Specifications

Wattage range	50W to 500W
Lumens output	5,000 to 50,000 lumens
Mounting options	pendant, surface, and chain
Color temperature range	2700K to 6500K
Material options	aluminum and steel
Beam angle options	narrow, medium, and wide
Voltage range	100V to 277V
Driver options	constant voltage and constant current drivers
IP rating	IP65 to IP68 (weather and dust-resistant)
Lifespan	50,000 to 100,000 hours of operation

## Installation and use instructions

- 1: Prior to use, kindly read the manual of the LED high bay light carefully.
- 2: Unauthorized personnel who are non-professionals or without technical knowledge are asked to refrain from repairing or modifying the product.
- 3: For safety reasons, turn off the power before installation to prevent possible electric shock caused by improper handling.
- 4: During installation, ensure that the input voltage to be connected is consistent with the voltage marked on the floodlight to avoid damaging the Industrial High Bay LED Lighting Fixtures.
- 5: To prolong the lifespan of the product, avoid using it in an area with a strong acid mist.
- 6: Take precautions against shock and impact during transportation and installation.
- 7: Before installation, ensure that the installation location is capable of supporting 10 times the weight of the product. Install it in a flat, vibration-free, and fire-safe area.
- 8: In case of lamp failure, gather the lamps in one spot, and send them back to our company for inspection and maintenance.
- 9: If any damage is found in the lamp body wire, switch off the power immediately and discontinue the use of the product.



 **Shaanxi Yahua Lighting Electric Equipment Co., Ltd.**

 +86 2981028690

 [summer@sxyhzm.com](mailto:summer@sxyhzm.com)

 [solarledstreet-light.com](http://solarledstreet-light.com)

No.1 Xinxi Avenue New Industrial Park, Hi-tech Zone, Xi'an, China

