



LED Meanwell Driver Outdoor Street Light 100W 150W IP65 6500K

Our Product Introduction

Basic Information

- Place of Origin: China
- Brand Name: Yahua lighting
- Certification: CE ROHS IES
- Delivery Time: 5-8 Days
- Payment Terms: L/C, D/A, D/P, T/T, Western Union, MoneyGram
- Supply Ability: 3000pcs per month

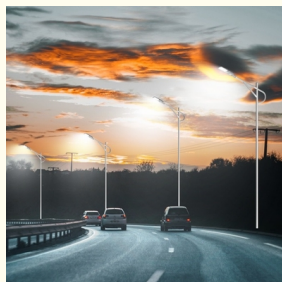


Product Specification

- Power: 100W/200W/300W
- Material: Die-casting Aluminum
- Input: 100-277VAC
- Output: 24-54VDC
- CCT: 3000K-6000K
- Luminous Efficiency: 150LM/W
- LED Chip: 144-320pcs
- MOQ: 5pcs
- Highlight: LED Meanwell Driver Outdoor Street Light, 150W IP65 Outdoor LED Street Light, 6500K Outdoor Street Light



More Images



Product Description

Products Description

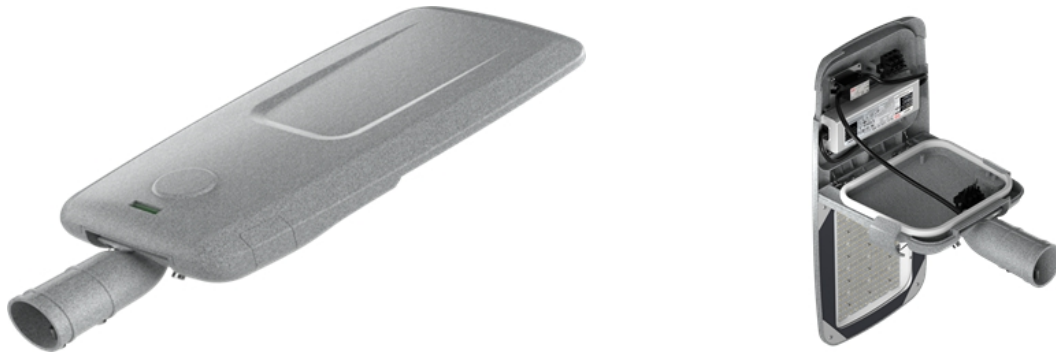
Introducing Galaxy Series LED Street Light-the ultimate lighting solution for all your street and outdoor needs! Our product boasts a sleek sandblasted grey die-cast aluminum casing, accompanied by a cutting-edge patented design. As we're the exclusive seller, you won't find anything else like it. Featuring top-of-the-range 3030SMD LED chips, our LED Street Light provides an unbeatable brightness of 150LM/W - ensuring no dark corners are left unilluminated. Designed to endure, Street Light 200W guarantees optimal performance every time. Whether you need to brighten up a bustling street, public park, or any other outdoor area, our product is the key to unparalleled results.

Features

1: Appearance design: The 200W Street Light boasts a contemporary and elegant sandblasted appearance, distinguishing it from other models in the market. This innovative design not only elevates its aesthetic appeal but also enhances its ability to withstand harsh weather conditions and environmental factors, making it a durable option. Offering both style and functionality, this LED street lamp is an ideal choice for all your lighting requirements.

2: Strong aluminum installation holder: This sturdy bracket has been specifically engineered to firmly grasp the light fixture and endure the harsh conditions found in outdoor settings. Its robust design guarantees the light stays put and is well-directed, casting ideal brightness on the surrounding vicinity. Made from lightweight aluminum, the bracket is also effortless to fix in place, delivering a practical and efficient solution for numerous street lighting purposes.

3: Built-in battery: With an internal battery, our Street Light 200W ensures a lasting and dependable source of light, even during power outages or in areas without access to electricity. This feature makes installation a breeze; no external power source is needed. The battery holds enough energy to power the light for several hours straight, guaranteeing reliable and continuous illumination. Ideal for illuminating streets, parking lots, and other outdoor areas, this light provides a practical and efficient solution.




Technical Specifications

Power	100w	200w	300w
Voltage	Input: 100-277VAC, Output: 24-54VDC, 50/60Hz		
Luminous efficiency	150LM/W		
Light source	3030-6V-1W LED Chip		
LED Chip	144PCS, 24B6C	240PCS, 30B8C	320PCS, 40B8C
Size	62.3*23.8*11.3cm	71.2*27.2*11.3cm	76*30.2*11.3cm
CRI	70		
Beam Angle	70°140°		
Line Diameter	3*0.75 0.3M		

Advantages of LED Street Light:

- 1: Voltage input is between 100-277 volts AC, and the output ranges from 24 to 54 volts DC, with a frequency of 50/60Hz.
- 2: The light efficacy is impressive, reaching up to 150 lumens per watt.
- 3: The body is expertly crafted using die-casting aluminum technology.
- 4: The high-lumen 3030 SMD light source boasts valid LM-80 Reports.
- 5: Its streamlined shape reduces wind impact, and its robust aluminum installation holder offers both vertical and horizontal installation options.
- 6: This product has an IP65 waterproof rating which makes it highly suitable for outdoor use.
- 7: This product is export certified and comes with the necessary documentation.



 **Shaanxi Yahua Lighting Electric Equipment Co., Ltd.**



+86 2981028690



summer@sxyhzm.com



solarledstreet-light.com

No.1 Xinxu Avenue New Industrial Park, Hi-tech Zone, Xi'an, China