



High Lumens 100W 200W LED Light Street For Outdoor Smart Cities

Our Product Introduction

Basic Information

- Place of Origin: China
- Brand Name: Yahua lighting
- Certification: CE ROHS IES
- Delivery Time: 5-8 Days
- Payment Terms: L/C, D/A, D/P, T/T, Western Union, MoneyGram
- Supply Ability: 3000pcs per month



Product Specification

- Power: 100W/200W/300W
- Luminous Efficiency: 150LM/W
- CCT: 3000K-6000K
- Input: 100-277VAC
- Output: 24-54VDC
- Material: Die-casting Aluminum
- LED Chip: 144-320pcs
- MOQ: 5pcs
- Highlight: High Lumens 100W LED Street Light, Aluminum Smart Cities Road Lamp Waterproof, Aluminum LED Street Light 150LM/W



More Images



Product Description

Products Description

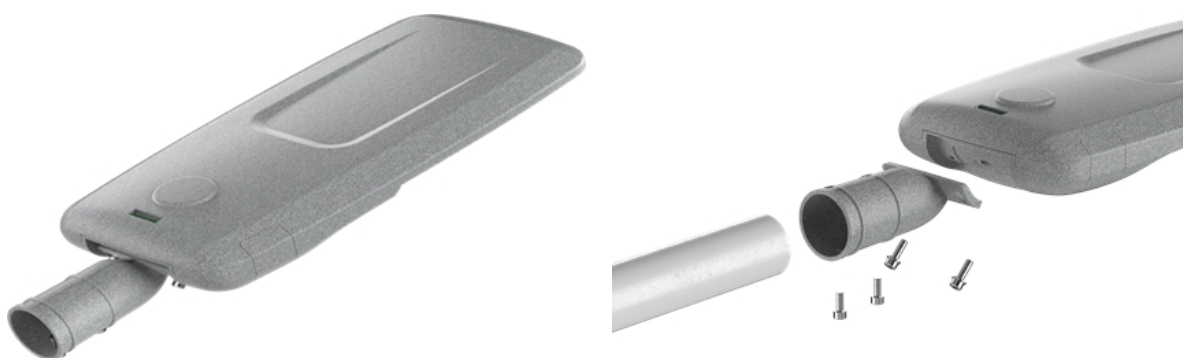
Introducing Street Light Road - a revolutionary product that ensures safer and more efficient street lighting. It boasts advanced LED technology that not only enhances the brightness of streets and sidewalks but also conserves energy. Built to withstand tough weather conditions, these streetlights are perfect for use in both residential and commercial areas. What sets it apart is its intelligent control system that allows for effortless monitoring and remote adjustments of the lights. This feature eliminates the need for frequent maintenance, thus resulting in major cost savings. Say goodbye to outdated street lighting and hello to Street Light Road.

Features

1: Appearance design: With their distinctive and contemporary design, these products will bring a touch of sophistication to any outdoor area. Their sleek and attractive aesthetic will enliven any street or roadway, enhancing their visibility and appeal.

2: Strong aluminum installation holder: The installation bracket boasts a sturdy construction crafted from premium aluminum, rendering it unyielding and long-lasting. Hence, ensuring that the streetlights are firmly anchored and capable of enduring harsh atmospheric conditions, including rain and wind.

3: Built-in battery: Street lights with a built-in battery can operate independently, ensuring continued illumination during power outages or in emergency situations. This innovative feature enhances safety and security, enabling areas within the street lights' range to remain well-lit and visible to drivers and pedestrians alike.



Technical Specifications

Power	100w	200w	300w
Voltage	Input: 100-277VAC, Output: 24-54VDC, 50/60Hz		
Luminous efficiency	150LM/W		
Light source	3030-6V-1W LED Chip		
LED Chip	144PCS, 24B6C	240PCS, 30B8C	320PCS, 40B8C
Size	62.3*23.8*11.3cm	71.2*27.2*11.3cm	76*30.2*11.3cm
CRI	70		
Beam Angle	70*140°		
Line Diameter	3*0.75 0.3M		

Advantages of LED Street Light

- 1: The input voltage falls between 100-277 volts AC while the output varies from 24 to 54 volts DC and operates at a frequency of 50/60Hz.
- 2: The light efficiency is remarkable and can reach up to 150 lumens per watt.
- 3: The body is crafted using die-casting aluminum technology, showcasing expert craftsmanship.
- 4: The high-lumen light source, equipped with the 3030 SMD chip, boasts valid LM-80 reports.
- 5: The sleek design reduces wind impact and the robust aluminum installation holder allows for both horizontal and vertical installation options.
- 6: This product boasts an IP65 waterproof rating, which makes it highly suitable for outdoor use.
- 7: With export certification and the necessary documentation, this product is ready to be shipped.



 **Shaanxi Yahua Lighting Electric Equipment Co., Ltd.**

 +86 2981028690

 summer@sxhzm.com

 solarledstreet-light.com

No.1 Xinxu Avenue New Industrial Park, Hi-tech Zone, Xi'an, China