



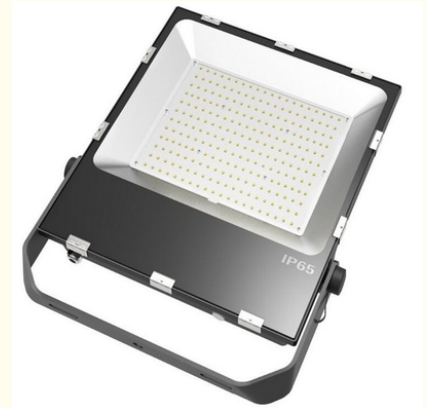
12v 100w Outdoor LED Flood Light Residential IP65 Waterproof 6500k Flood Lights

Our Product Introduction

for more products please visit us on solarledstreet-light.com

Basic Information

- Place of Origin: China
- Brand Name: Yahua lighting
- Certification: CE ROHS IES
- Delivery Time: 5-8 Days
- Payment Terms: L/C, D/A, D/P, T/T, Western Union, MoneyGram
- Supply Ability: 3000pcs per month

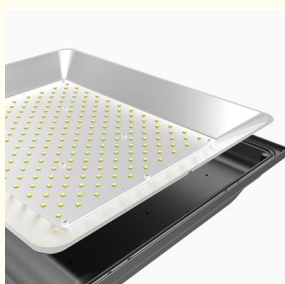


Product Specification

- Color Temperature: 6500K
- Waterproof Rating: IP65
- Lifespan: 30,000 To 50,000 Hours
- Material: Aluminum And Plastic With A Tempered Glass Lens To Protect The LED Chips
- Driver: Meanwell Driver
- MOQ: 10pcs
- Highlight: 6500k LED Flood Light, IP65 LED Flood Light, Waterproof Aluminum Indoor Flood Lights



More Images



Product Description

Products Description

Introducing the excellent LED Floodlight 200W 6500K IP65 - the ultimate solution to boost visibility and safety in any condition. Its impressive color temperature of 6500K and high lumen output creates a bright white light, illuminating any outdoor area. Constructed with a rugged IP65-rated housing, this lighting system is built to withstand rough weather conditions and resist water and dust intrusion. Additionally, this floodlight is energy-efficient, using notably less power than conventional lighting sources while maintaining top-level brightness. The prolonged lifespan of this LED floodlight translates to significantly reduced maintenance costs, allowing for minimal operational disruption.

Feature

1: Lamp bead: Experience the perfect blend of brightness and energy efficiency with our LED Floodlight 200W 6500K IP65 featuring top-of-the-line lamp beads. These high-quality LED lights deliver exceptional performance with clear and bright illumination that amplifies visibility and security in any outdoor environment. Thanks to their superior lifespan and low energy usage, lamp beads make for an ideal choice for businesses seeking sustainable and cost-effective lighting solutions for their facilities.

2: Featuring a reliable Meanwell driver, our 200W LED Floodlight boasts an impressive color temperature of 6500K and an IP65 rating. With this cutting-edge driver technology, you can trust that your floodlight will perform effectively and consistently, delivering top-notch results every time. Not only does the Meanwell driver provide a steady power output, but it also helps to minimize any disruptive spikes that could impact the longevity of the fixture. Plus, the driver comes equipped with advanced safety features such as overvoltage and overcurrent protection, ensuring the floodlight is durable and able to withstand a range of conditions.

3: Installing our LED floodlight is a breeze thanks to its cleverly-engineered mounting brackets and adjustable angles, which allow you to effortlessly achieve highly-targeted illumination. Its streamlined, intuitive design also makes retrofitting the floodlight onto existing fixtures a breeze, resulting in significant cost and time savings. To boost energy efficiency and customizability, the floodlight can be outfitted with cutting-edge lighting controls. No matter the size or layout of your outdoor space, our LED floodlight is your best bet for delivering top-quality lighting.



Technical Specifications

Item Type	LED Floodlight 200W 6500K IP65
Brand Name	Yahua lighting
Input Voltage	AC85-265V/50Hz
Material	Die-cast aluminum
Certification	CCC,CE, ROHS,IP65
IP Rating	IP 65
Life Hours	50000Hours
Light Source	LED
Chip	Bridgelux, Epistar
Working Temperature	-40 -50
Color Temperature	2700K--6500K warm white, cool white, pure white
Power factor	>0.95
Beam angle	120°
Warranty	3-5 years

Comparison of LED floodlights and solar floodlights

LED floodlights and solar floodlights differ significantly in several areas. Firstly, their power source differs, with LED floodlights being connected to an electrical grid and relying on electricity for operation while solar floodlights utilize photovoltaic panels, making them a more sustainable and eco-friendly option.

Secondly, LED floodlights are relatively easy to install and only need a connection to an existing electrical system. On the other hand, solar floodlights require the installation of photovoltaic panels in a location that receives sufficient sunlight, which may necessitate additional planning and installation costs.

Thirdly, solar floodlights are generally more energy-efficient than LED floodlights, relying on renewable energy sources and generating no greenhouse gas emissions. While LED floodlights are also energy-efficient compared to traditional lighting options, they still require electricity and could contribute to energy consumption and costs.

Fourthly, LED floodlights tend to be less expensive upfront than solar floodlights as they don't require purchasing and installing photovoltaic panels. But in the long term, solar floodlights may be a more cost-effective option as they don't require ongoing

electricity costs and could qualify for government incentives.

Finally, LED floodlights typically have a higher lumen output, providing brighter illumination than solar floodlights. However, solar floodlights have tremendously improved in recent years and can provide adequate brightness for various applications.





+86 2981028690



summer@sxhzm.com



solarledstreet-light.com

No.1 Xinxu Avenue New Industrial Park, Hi-tech Zone, Xi'an,China