



300W Integrated Solar Street Light IP65 Waterproof Aluminum Body

Our Product Introduction

for more products please visit us on solarledstreet-light.com

Basic Information

- Place of Origin: China
- Brand Name: Yahua Lighting
- Certification: CE IP65 ROHS ISO
- Packaging Details: Anti-collision and shatterproof packaging
- Delivery Time: 5-8 days
- Payment Terms: T/T, Western Union, MoneyGram
- Supply Ability: 500Pcs/month

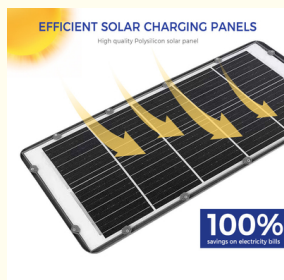


Product Specification

- Waterproof Level: IP65
- Solar Panel: Monocrystalline Silicon
- Lighting Time: More Than 12 Hours
- Voltage: 25.6V
- Battery Capacity: 25.6V 32Ah/48Ah
- Installation Height: 9-12m
- Lighting Angle: 140°
- Material: Aluminum Alloy
- Highlight: Integrated Solar LED Street Lamp 25.6V, Aluminum Alloy 300 Watt Solar Light, Integrated 300W Solar Street Light



More Images



Product Description

Product Size(MM)	703*365*87MM	810*365*87MM	916*365*87MM
Power	300W	400W	500W
Number Of Lamp Beads	306PCS	408 PCS	510 PCS
Lithium Battery	3.2V/40A	3.2V/45A	3.2V/50A
Solar Panel	5V40W	5V45W	5V53W
Luminous Flux	130-140LM/W		
IP Rating	IP65		
Material	Die-Cast Aluminum		
Warranty	3 years		
Lighting time	12 H		
Application	Road, Community And Town Lighting		

- Superior Brightness and Efficiency: The solar street light features SMD3030 high brightness 324 light beads, offering an output of 8950 lumens at 6000K, covering a lighting range of 200 square meters. With a remarkable 21% solar conversion rate, it provides over 14 hours of continuous illumination after a full charge.
- All-in-One Design for Cost Savings and Safety: The solar panels are positioned at the back of the light, ensuring a simpler and lighter setup. This maintenance-free design eliminates the need for wiring or trenching, saving electricity, and promoting eco-friendliness. The monocrystalline silicon solar photovoltaic panels boast high photoelectric conversion efficiency.
- Smart Motion Sensor with Multiple Lighting Modes: The integrated motion sensor and sunlight control automatically regulate the light, turning it on at dusk and off at dawn. It offers three lighting modes: Radar Mode, 3 Hours Constantly+Radar Mode, and Auto Mode, providing flexibility in brightness and operation based on environmental conditions and user preferences.
- Easy Installation within 15 Minutes: Effortless mounting with 4 screws to connect the pole and solar street light, along with 4 screws for wall installation. This ease of installation makes it ideal for various outdoor settings such as streets, yards, gardens, pathways, etc., enhancing security and convenience at night with no need for stumbling in the dark.
- IP65 Waterproof and Weatherproof: Designed for outdoor use, this LED solar security motion sensor light is IP65 waterproof and constructed from durable ABS material, ensuring resilience in rain and other extreme weather conditions. It is designed to withstand harsh outdoor elements while providing reliable illumination. Before initial use, it's recommended to turn on the street lamp switch and charge it for 6-8 hours under direct sunlight.



Shaanxi Yahua Lighting Electric Equipment Co., Ltd.



+86 2981028690



summer@sxyhzm.com



solarledstreet-light.com

No.1 Xinxu Avenue New Industrial Park, Hi-tech Zone, Xi'an, China