



Shaanxi Yahua Lighting Electric Equipment Co., Ltd.

[solarledstreet-light.com](http://solarledstreet-light.com)

## All In One Solar Street Lighting Aluminum Alloy Ip65 Waterproof Led Street Light 150Lm/W

Our Product Introduction

For more products please visit us on [solarledstreet-light.com](http://solarledstreet-light.com)

### Basic Information

- Place of Origin: Guangdong China
- Brand Name: Yahua Solar Street lighting
- Certification: EMC, RoHS, CE, FCC, LVD
- Packaging Details: Anti-collision and shatterproof packaging
- Delivery Time: 5-8 days
- Payment Terms: T/T, Western Union, MoneyGram
- Supply Ability: 500 pcs/month

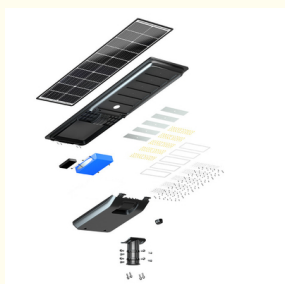


### Product Specification

- Application: Road , Street , Yard, Park, Garden Etc
- IP Rating: IP65 Waterproof
- Model Name: All In One Solar Street Lighting
- Working Temperature: -40°C-60°C
- Material: Aluminum Alloy
- Luminous Flux: 150lm/w
- Led Chip: SMD3030
- Highlight: **Ip65 Solar Street Lighting,**  
**150Lm/W Solar Street Lighting,**  
**Aluminum Alloy Solar Street Lighting**



### More Images



## Product Description

### Product Description:

Presenting the Integrated Solar Street Light, an advanced solar lighting solution powered by robust lithium batteries. This state-of-the-art system combines a solar panel, LED light source, charge controller, and motion sensor for unparalleled performance. With minimal maintenance requirements, it delivers longevity without frequent servicing needs. Featuring a built-in motion sensor with a detection range of up to 16 meters, it enhances security and efficiency. The high-intensity LED light is precisely managed by specially designed asymmetric lenses, perfect for street lighting. Employing an MPPT charge controller, it efficiently charges the internal batteries, while the aluminum body structure ensures effective heat dissipation and component protection.

### Features:

1. Versatile Pricing Options: The all-in-one LED Solar Street Light offers flexibility in pricing, providing multiple options to optimize solar charging and illumination from different perspectives.
2. Elevation and Reach: Capable of reaching heights of 4-12m, effectively lighting 3-4 dual lanes, with a lighting coverage ranging from 300-2000 square meters.
3. High-Efficiency Photovoltaic Panels: Utilizing high-performance monocrystalline solar cells, achieving a power generation efficiency of up to 22%.
4. Extended Lifespan: Fitted with LED lamp beads from globally recognized brands, ensuring a lifespan of up to 5 years.
5. Cutting-Edge Surveillance: In addition to a remote controller, this integrated solar street light, equipped with a CCTV camera, features an accompanying app for convenient monitoring from anywhere via a mobile device.

### Technical Parameters:

| Power               | 60W                    | 80W                    | 100W                   |
|---------------------|------------------------|------------------------|------------------------|
| Battery             | LiFePO4 12.8V 32AH     | LiFePO4 12.8V 40AH     | LiFePO4 12.8V 48AH     |
| Mono solar panel    | 18V 80W                | 18V 100W               | 18V 120W               |
| Charging time       | 6-8 hours              |                        |                        |
| Luminous efficiency | 150-160LM/W            |                        |                        |
| Luminous flux       | 8400-9600LM            | 11200-12800LM          | 15000-16000LM          |
| Color temperature   | 5000-6000K             |                        |                        |
| Working temperature | -25°C-80°C             |                        |                        |
| CRI                 | >70                    |                        |                        |
| Beam angle          | 140°70°                |                        |                        |
| Lifespan            | 50000 hours+           |                        |                        |
| LED type (Qty)      | Lumileds 5050 (150PCS) | Lumileds 5050 (200PCS) | Lumileds 5050 (250PCS) |
| Installation height | 6-7M                   | 7-8M                   | 8-10M                  |
| IP Grade            | IP65-IP66              |                        |                        |



### Support and Services:

Our Solar LED Street Light comes with full technical support and a range of services to ensure that you get the most out of your product. Our team of experts is dedicated to providing you with the assistance you need to install, operate, and maintain your solar lighting solution. Our support includes troubleshooting advice, maintenance guidance, and tips for optimizing the performance of your Solar LED Street Light. We also offer a comprehensive warranty for our products, assuring you of our commitment to quality and your satisfaction. For further assistance, please refer to our user manual or our online resources, which include FAQs and instructional videos. Our goal is to provide you with reliable, efficient, and sustainable lighting solutions.

### Packing and Shipping:

#### Product Packaging for Solar LED Street Light:

Each Solar LED Street Light is securely packaged in a protective box to ensure it arrives in perfect condition. The box is made of high-quality, durable cardboard with foam padding or bubble wrap to provide additional protection against impacts during transit. Inside the box, the solar panel, LED light, battery, and mounting accessories are individually wrapped and sectioned to prevent any movement that could cause damage. The packaging also includes a user manual with installation instructions and maintenance tips.

#### Shipping for Solar LED Street Light:

The Solar LED Street Lights are shipped using reputable courier services to ensure timely and safe delivery. Each package is labeled with handling instructions and fragile warnings to ensure it is treated with care. The tracking number is provided upon dispatch so that you can monitor the shipment's progress. We strive to dispatch orders within the stipulated timeframe and recommend inspecting the product upon arrival to ensure it has not been damaged during shipping.

 **Shaanxi Yahua Lighting Electric Equipment Co., Ltd.**

 +86 2981028690

 [summer@sxyhzm.com](mailto:summer@sxyhzm.com)

 [solarledstreet-light.com](http://solarledstreet-light.com)

No.1 Xinxi Avenue New Industrial Park, Hi-tech Zone, Xi'an, China